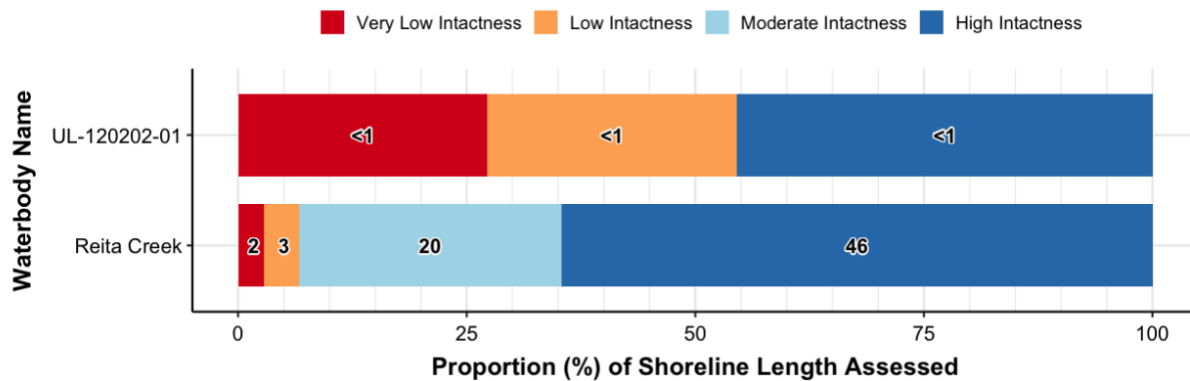


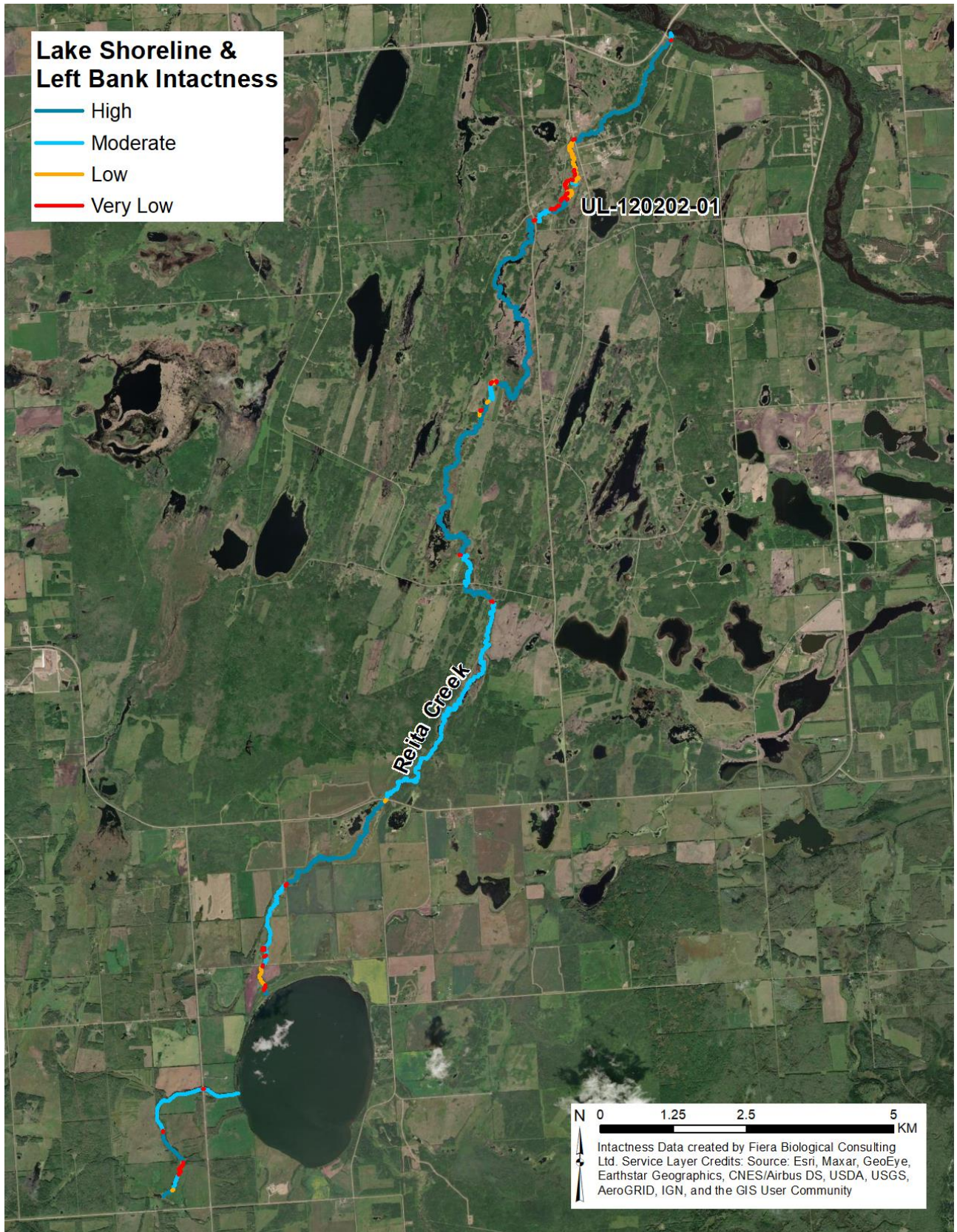
Reita Creek

Riparian Management Area Intactness

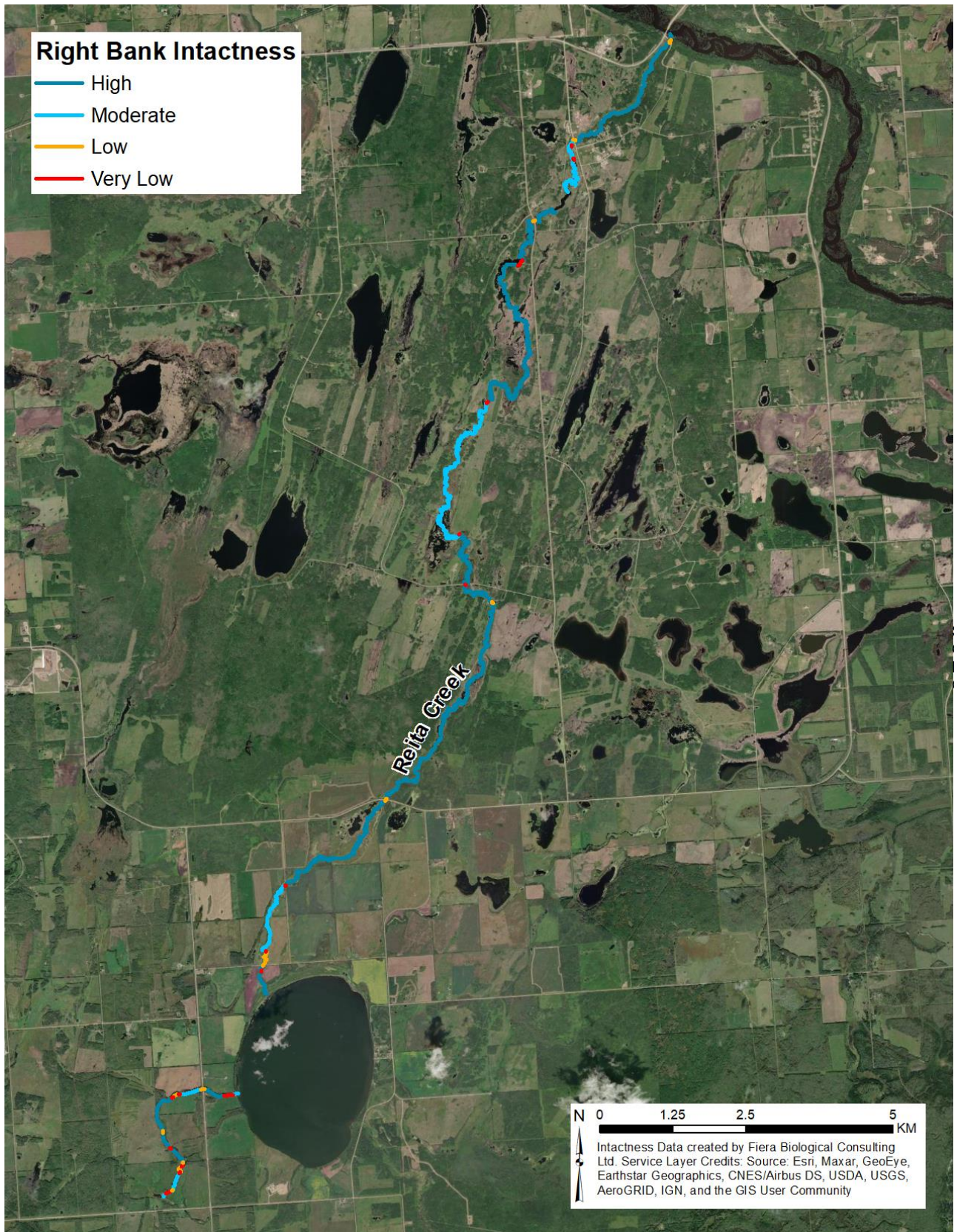
Riparian intactness was calculated for approximately 72 km of shoreline along Reita Creek. This included an Unnamed Lake (UL-120202-01), which is an unnamed feature in the existing provincial hydrography datasets. Reita Creek flows through this lake, and because it is a distinct feature in the existing provincial hydrography data, it was assigned a unique numerical identification and was summarized separately from Reita Creek. Overall, ~64% of the shoreline along Reita Creek was classified as High Intactness, with just over 7 km of the shoreline being classified as Low or Very Low Intactness.



NOTE: Numbers indicate the total length (km) of shoreline associated with each intactness category.



Map 1. Intactness for the left bank of Reita Creek.



Map 2. Intactness for the right bank of Reita Creek.